

CIRCUITS	DIM A	DIM B	DIM C	REMARK	
				有導	無導
10	3.20	6.00	4.80		
12	4.00	6.80	5.60		
14	4.80	7.60	6.40		
16	5.60	8.40	7.20		
18	6.40	9.20	8.00		
20	7.20	10.00	8.80		
22	8.00	10.80	9.60		
24	8.80	11.60	10.40		
26	9.60	12.40	11.20		
28	10.40	13.20	12.00	⊕	△
30	11.20	14.00	12.80	⊕	
32	12.00	14.80	13.60		
34	12.80	15.60	14.40		
36	13.60	16.40	15.20		
40	15.20	18.00	16.80		
50	19.20	22.00	20.80	⊕	
60	23.20	26.00	24.80		
70	27.20	30.00	28.80		
80	31.20	34.00	32.80		
90	35.20	38.00	36.80		
100	39.20	42.00	40.80		

ZIV-XXS9-X-X-*

Number of Contacts —
 Straight —
 Contact Plating —

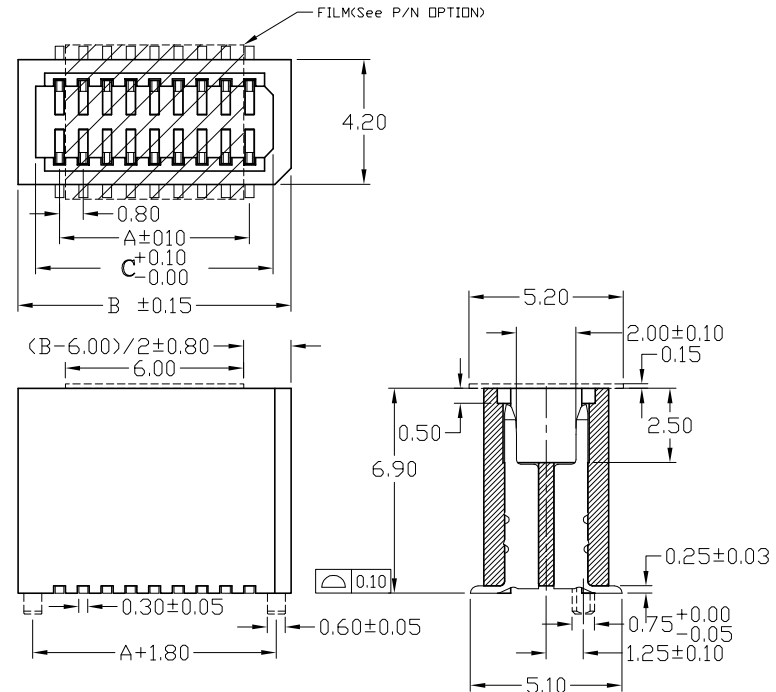
NULL: TUBE (W/O FILM)
 C: FILM+REEL
 F: FILM+TUBE
 1: With Locating peg
 0/W: Locating peg

Definition	Code
◎ Gold plated:	
flash B	15μ" F
10μ" E	30μ" J
◎Standard: B	

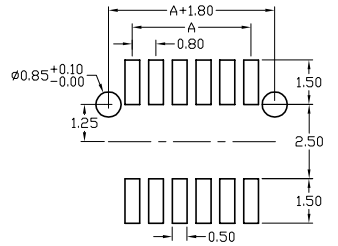
SPECIFICATIONS

Current Rating: 0.5 Amps
 Insulator resistance: 100 Megohms Min.
 Contact resistance: 40 m ohm Max.
 Dielectric withstanding: AC 500 V
 Operating Temperature: -40° - +85°C
 Contact Material: Phosphor bronze
 Insulator Material: High Temperature Thermoplastic, UL 94V-0
 Color: Natural
 Finish: Gold all over nickel

Diagram	Molding description
○	mass production & assemble mold
◎	sample & assemble mold
⊕	mass production & fix mold
⊕	sample & fix mold



Recommended PCB Layout
 (PCB TOLERANCE ±0.05)



Rev.	ECN Number	Description	Drawn	Date
3	DOC9303173	圖面修改如圖所示	林秋蘭	03/09/04'
4	EC2-470165	新增 50 PIN 有導樣品	陳美竹	12/07/04'
5	EC2-470364	新增 28 PIN 有導樣品	陳美竹	20/07/04'



GENERAL TOLERANCE		SCALE	ORIGINAL DRAWN	DATE
XX. ± 0.50	XXX. ±	1=1	王婉云	19/01/04'
X. ± 0.30	.XXX ±	UNIT	林錫錦	DATE
.X ± 0.25	.X* ± 4*	MM	林錫錦	20/07/04'
.XX ± 0.20	.X* ± 4*	SIZE	林錫錦	DATE
		A4/4		20/07/04'

DWG. NO.	TITLE	REV.
X-XX	0.8mm Board To Board Socket	5
F:\DWG\CDWG\ZIV\ZIVMOW.DWG	(成品規格圖)	SHEET
PARTS NO. ZIV-XXS9-X-X-*		1/1