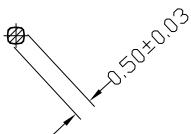
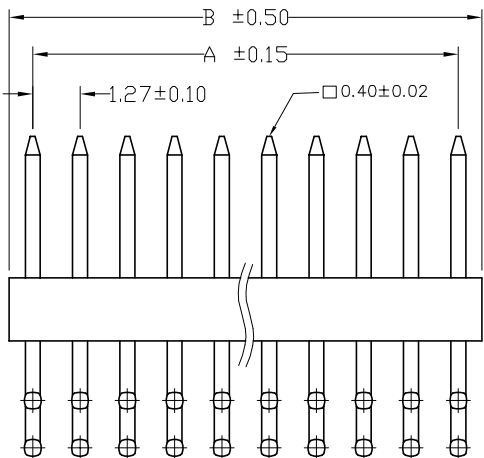
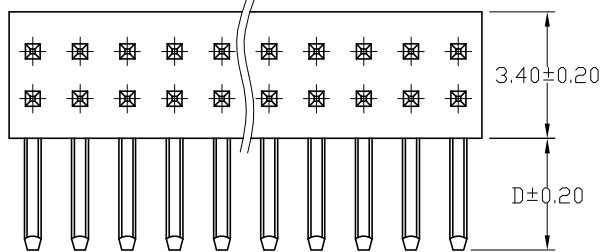


No. of Contacts	DIMENSIONS		REMARK (備註)
	A	B	
4	1.27	2.54	○
6	2.54	3.81	○
8	3.81	5.08	○
10	5.08	6.35	○
12	6.35	7.62	○
14	7.62	8.89	○
16	8.89	10.16	○
18	10.16	11.43	○
20	11.43	12.70	○
22	12.70	13.97	○
24	13.97	15.24	○
26	15.24	16.51	○
28	16.51	17.78	○
30	17.78	19.05	○
32	19.05	20.32	○
34	20.32	21.59	○
36	21.59	22.86	○
38	22.86	24.13	○
40	24.13	25.40	○
42	25.40	26.67	○
44	26.67	27.94	○
46	27.94	29.21	○
48	29.21	30.48	○
50	30.48	31.75	○
52	31.75	33.02	○
54	33.02	34.29	○
56	34.29	35.56	○
58	35.56	36.83	○
60	36.83	38.10	○
62	38.10	39.37	○
64	39.37	40.64	○
66	40.64	41.91	○
68	41.91	43.18	○
70	43.18	44.45	○
72	44.45	45.72	○
74	45.72	46.99	○
76	46.99	48.26	○
78	48.26	49.53	○
80	49.53	50.80	○
82	50.80	52.07	○
84	52.07	53.34	○
86	53.34	54.61	○
88	54.61	55.88	○
90	55.88	57.15	○
92	57.15	58.42	○
94	58.42	59.69	○
96	59.69	60.96	○
98	60.96	62.23	○
100	62.23	63.50	○



	H	H1
R1	2.70	3.10
R2	1.70	3.30

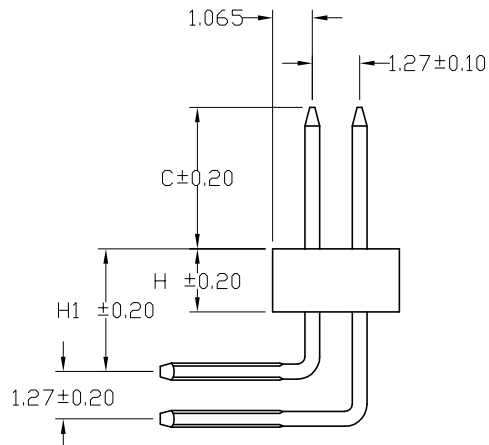
QOT-XXRX-X-C/D  
 Number of Contacts  
 Right Angle  
 Contact Plating  
 Pin Length mm

Definition	Code
◎ Tin plated:	A
◎ Gold plated:	
flash B	15μ" F
10μ" E	30μ" J
◎ Duplex plating:	
flash K	15μ" P
10μ" N	30μ" U
◎ Standard:	K
◎ Prefix "V" means	lead free plating

**SPECIFICATIONS**

Current Rating: 1 Amp  
 Insulator resistance: 5000 Megohms min.  
 Dielectric withstanding: AC 500 V  
 Operating Temperature: -40°~+105°C  
 Max Processing Temp: 230° for 30 seconds  
 Contact Material: Copper alloy  
 Insulator Material: High Temperature Thermoplastic, UL 94V-0

Finish: Tin, Gold or Duplex plated  
 ◎ Standard: Duplex plated  
 ◎ Note: Duplex plating: gold plated on contact area, Tin on solder area



◎ For illustration purpose the QOT-XXRX-X-038/030 was shown

Recommended PCB Layout (PCB TOLERANCE ±0.05)

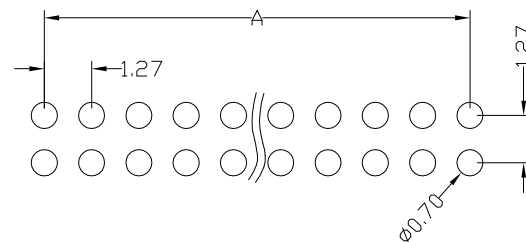


Diagram	Molding description	Rev.	ECN Number	Description	Drawn	Date
○	mass production & assemble mold	3	EC2-4C0262	變更共用圖 QOT-XXRX-038/030->QOT-XXRX-X-C/D	洪銀雯	12/14 04'
◎	sample & assemble mold	4	EC2-530498	新增 QOT-XXRX-X-038/017	陳賜農	03/23'05
⊕	mass production & fix mold	5	EC2-540548	新增 QOT-XXRX-X-060/030	陳顯鑫	04/25 05'
⊗	sample & fix mold					

 Plastron Precision Co., Ltd. 樟翔精密股份有限公司	GENERAL TOLERANCE		SCALE 1=1	ORIGINAL DRAWN 王佩云	DATE 07/25 02'	DWG. NO. X-XX F:\DWG\CDWG\QOT\QOTOJ.DWG	TITLE 1.27X1.27mm HEADER (成品規格圖)	REV. 5
	.XX ± 0.50	XXX ±	UNIT MM	CHECK 江坤容	DATE 03/23'05			PARTS NO. QOT-XXRX-X-C/D
	.X ± 0.30	.XXX ±	SIZE A4/5	APPROVE 林錫錦	DATE 03/23'05			
	.X ± 0.25	X.* ± 4'						
.XX ± 0.20	.X.* ± 4'							