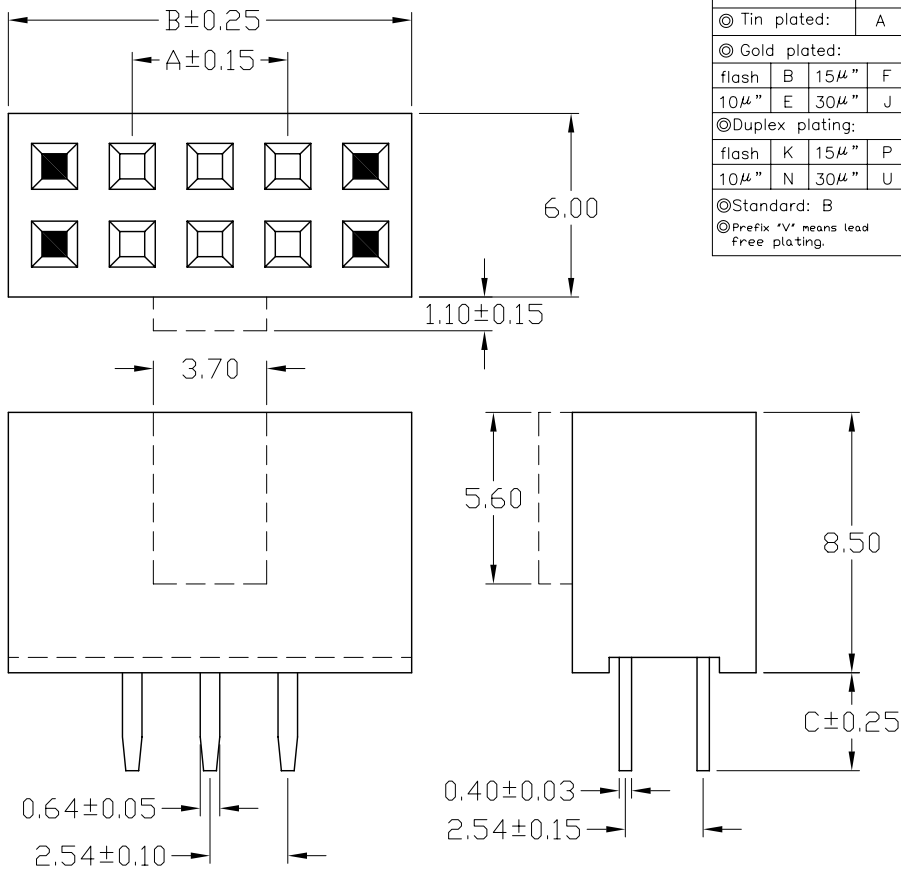


No. of Contacts	DIMENSIONS		REMARK	
	A	B	無鼻子	有鼻子
6	5.08	12.62	○	⊕
8	7.62	15.16	○	⊕
10	10.16	17.70	○	⊕
12	12.70	20.24	○	⊕
14	15.24	22.78	○	⊕
16	17.78	25.32	○	⊕
20	22.86	30.40	○	⊕
22	25.40	32.94	○	⊕
24	27.94	35.48	○	⊕
26	30.48	38.02	○	⊕
28	33.02	40.56	○	⊕
30	35.56	43.10	○	⊕
34	40.64	48.18	○	⊕
40	48.26	55.80	○	⊕
44	53.34	60.88	○	⊕
48	58.42	65.96	○	⊕
50	60.96	68.50	○	⊕
52	63.50	71.04	○	⊕
60	73.66	81.20	○	⊕
64	78.74	86.28	○	⊕

Diagram	Molding description
○	mass production & assemble mold
⊙	sample & assemble mold
⊕	mass production & fix mold
⊕	sample & fix mold



BPHFZ-XXS-X-C-X-*
 NULL:PBT
 F:Nylon-6T
 0:W/O Polarization Bump
 1:With Polarization Bump
 Pin Length mm

Number of Contacts
Straight

Contact Plating

Definition	Code
◎ Tin plated:	A
◎ Gold plated:	
flash B	15μ" F
10μ" E	30μ" J
◎ Duplex plating:	
flash K	15μ" P
10μ" N	30μ" U
◎ Standard: B	
◎ Prefix 'V' means lead free plating.	

SPECIFICATIONS

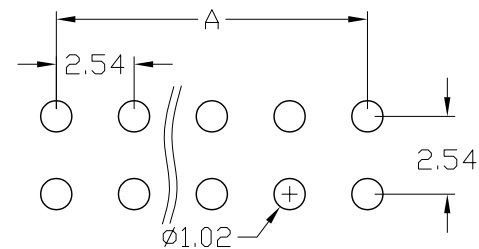
Current Rating: 3 Amps
 Insulator resistance: 5000 Megohms min.
 Contact resistance: 20 m ohms max.
 Dielectric withstanding: AC 1000 V
 Operating Temperature: -40°~+105°C
 Contact Material: Phosphor bronze
 Insulator Material: Thermoplastic, UL 94V-0
 Color : Black

◎Standard:P.B.T

Finish: Tin,Gold or Duplex plated
 ◎ Standard: Gold flash all over
 ◎ Note:
 Duplex plating: gold plated on contact area,
 Tin on solder area

◎For illustration purpose the
 BPHFZ-XXS-X-032-X was shown

Recommended PCB Layout
 (PCB TOLERANCE ±0.05)

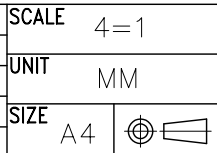


PARTS NO.	C	REMARK (備註)
BPHFZ-XXS-X-032-X-*	3.20	○
BPHFZ-XXS-X-110-X-*	11.00	○
BPHFZ-XXS-X-025-X-*	2.50	

Rev.	ECN Number	Description	Drawn	Date
6	EC2-4A0508	新增環保電鍍	邱若婷	10/28 '04'
7	EC2-4B0072	新增材質選項	洪銀雯	11/04/04'
8	EC2-580140	新增規格	陳美竹	08/18'05



GENERAL TOLERANCE		SCALE
XX. ± 0.50	XXX. ±	4=1
X. ± 0.30	.XXX ±	UNIT
.X ± 0.25	.X* ± 4°	MM
.XX ± 0.20	.X* ± 4°	SIZE



DRAWN	邱若婷	DATE	27-03-03'
CHECK	林錫錦	DATE	08/18'05
APPROVE	林錫錦	DATE	08/18'05

DWG. NO.	F:\DWG\CDWG\BPHFZ\BPHFZS00.DWG
PARTS NO.	BPHFZ-XXS-X-C-X-*

TITLE	2.54*2.54mm SOCKET (成品規格圖)
-------	----------------------------------

REV.	8
SHEET	1/1