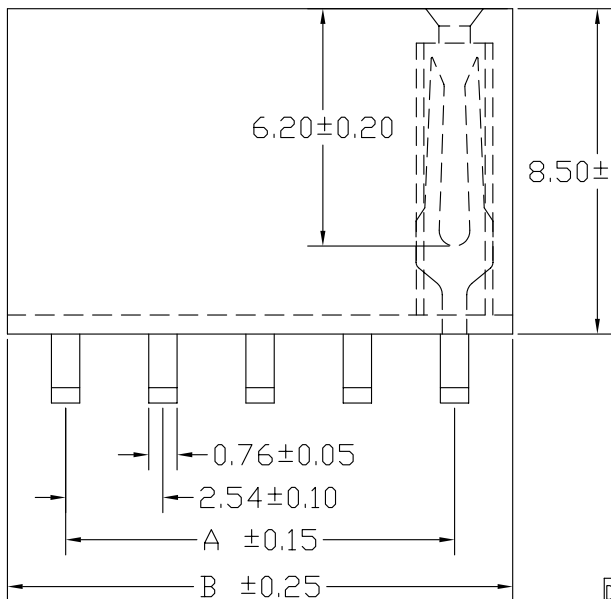
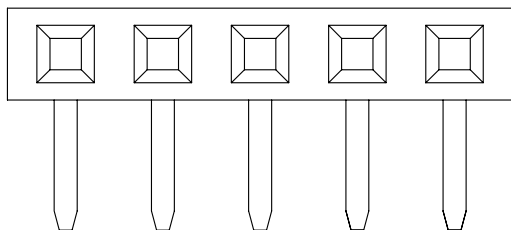


No. of Contacts	DIMENSIONS		REMARK (備註)
	A	B	
3	5.08	8.12	○
4	7.62	10.66	○
5	10.16	13.20	○
6	12.70	15.74	○
7	15.24	18.28	○
8	17.78	20.82	○
9	20.32	23.36	○
10	22.86	25.90	○
11	25.40	28.44	○
12	27.94	30.98	○
13	30.48	33.52	○
14	33.02	36.06	○
15	35.56	38.60	○
16	38.10	41.14	○
17	40.64	43.68	○
18	43.18	45.72	○
19	45.72	48.76	○
20	48.26	51.30	○
21	50.80	53.84	○
22	53.34	56.38	○
23	55.88	58.92	○
24	58.42	61.46	○
25	60.96	64.00	○
26	63.50	66.54	○
27	66.04	69.08	○
28	68.58	71.62	○
29	71.12	74.16	○
30	73.66	76.70	○
31	76.20	79.24	○
32	78.74	81.78	○
33	81.28	84.32	○
34	83.82	86.86	○
35	86.36	89.40	○
36	88.90	91.94	○
37	91.44	94.48	○
38	93.98	97.02	○
39	96.52	99.56	○
40	99.06	102.10	○



PHFY-XXR-X-C-\*-\*

Number of Contacts  
Right Angle

NULL: TRAY  
H1: TRAY+ 隔板  
NULL: Thermoplastic, UL 94V-0(PBT)  
F: High Temperature Thermoplastic, UL 94V-0(Nylon-6T)

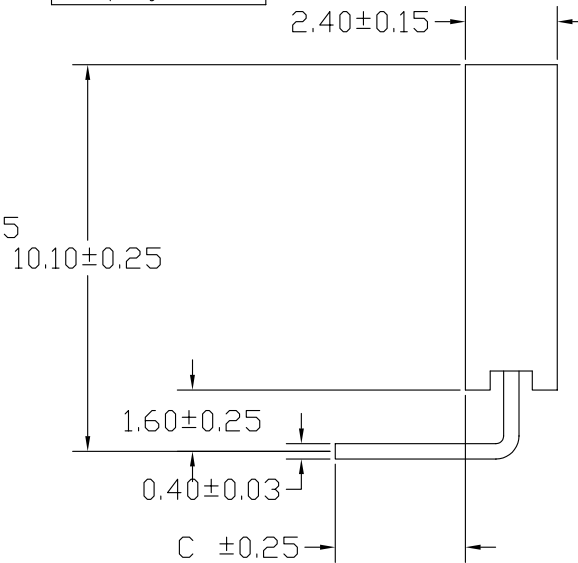
Contact Plating

Definition	Code
◎ Tin plated:	A
◎ Gold plated:	
flash B 15μ"	F
10μ" E 30μ"	J
◎ Duplex plating:	
flash K 15μ"	P
10μ" N 30μ"	U
◎ Standard: B	
◎ Prefix "V" means lead free plating.	

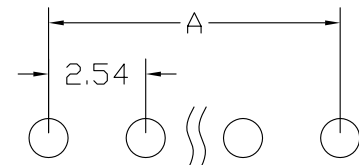
SPECIFICATIONS

Current Rating: 3 Amps  
 Insulator resistance: 5000 Megohms min.  
 Contact resistance: 20 m ohms max.  
 Dielectric withstanding: AC 1000 V  
 Operating Temperature: -40°~+105°C  
 Contact Material: Phosphor Bronze.  
 Insulator Material: Thermoplastic, UL 94V-0  
 Color : Black

Finish: Tin, Gold or Duplex plated  
 ◎ Standard: Gold flash all over  
 ◎ Note:  
 Duplex plating: gold plated on contact area,  
 Tin on solder area



Recommended PCB Layout  
(PCB TOLERANCE ±0.05)



C
3.40
8.00
2.50

Diagram	Molding description	Rev.	ECN Number	Description	Drawn	Date
○	mass production & assemble mold	3	EC2-470551	新增材質及包裝選項	陳美竹	07/26/04'
◎	sample & assemble mold	4	EC2-4B0066	新增環保電鍍	邱若婷	11/03 04'
⊕	mass production & fix mold	5	ECR-620069	修改包裝說明	詹益東	03/02 06'
⊗	sample & fix mold					



GENERAL TOLERANCE

XX. ± 0.50	XXX. ±
X. ± 0.30	.XXX ±
.X ± 0.25	X.° ± 4°
.XX ± 0.20	.X° ± 4°

SCALE 5=1

UNIT MM

SIZE A4

ORIGINAL DRAWN 邱若婷 DATE 07/06/04'

CHECK 林錫錦 DATE 03/02 06'

APPROVE 林錫錦 DATE 03/02 06'

DWG. NO. X-XX

F:\DWG\CDWG\PHF\PHFY0A.DWG

PARTS NO. PHFY-XXR-X-C-\*-\*

TITLE 2.54mm SOCKET (成品規格圖)

REV. 5

SHEET 1/1