

No. of Contacts	DIMENSIONS		REMARK (備註)	PAD (備註)
	A	B		
6	4.00	8.10	○	○
8	6.00	10.10	○	○
10	8.00	12.10	○	○
12	10.00	14.10	○	○
14	12.00	16.10	○	○
16	14.00	18.10	○	○
18	16.00	20.10	○	○
20	18.00	22.10	○	○
22	20.00	24.10	○	○
24	22.00	26.10	○	○
26	24.00	28.10	○	○
28	26.00	30.10	○	○
30	28.00	32.10	○	○
32	30.00	34.10	○	○
34	32.00	36.10	○	○
36	34.00	38.10	○	○
38	36.00	40.10	○	○
40	38.00	42.10	○	○
42	40.00	44.10	○	○
44	42.00	46.10	○	○
46	44.00	48.10	○	○
48	46.00	50.10	○	○
50	48.00	52.10	○	○
52	50.00	54.10	○	○
54	52.00	56.10	○	○
56	54.00	58.10	○	○
58	56.00	60.10	○	○
60	58.00	62.10	○	○
62	60.00	64.10	○	○
64	62.00	66.10	○	○

SPTU-XX-X-C-X-*

Number of Contacts

NULL: W/O PAD
P: PAD+TUBE
R: PAD+REEL

0: W/O Locating peg
1: With Locating peg

SPECIFICATIONS

Current Rating: 1 Amp
 Insulator resistance: 5000 Megohms min.
 Dielectric withstanding: AC 500 V
 Operating Temperature: -40° - +105°C
 Max Processing Temp: 230° for 30 seconds
 Contact Material: Copper alloy
 Insulator Material: High Temperature Thermoplastic, UL 94V-0
 Color: Black

Finish: Gold plated
 ◎ Standard: Gold flash all over

Definition	Code		
◎ Gold plated:			
flash	B	15μ"	F
10μ"	E	30μ"	J
◎ Standard: B			
◎ Prefix "V" means lead free plating.			

◎ For illustration purpose the SPTU-XX-X-045-X was shown

Recommended PCB Layout
(PCB TOLERANCE ±0.08)

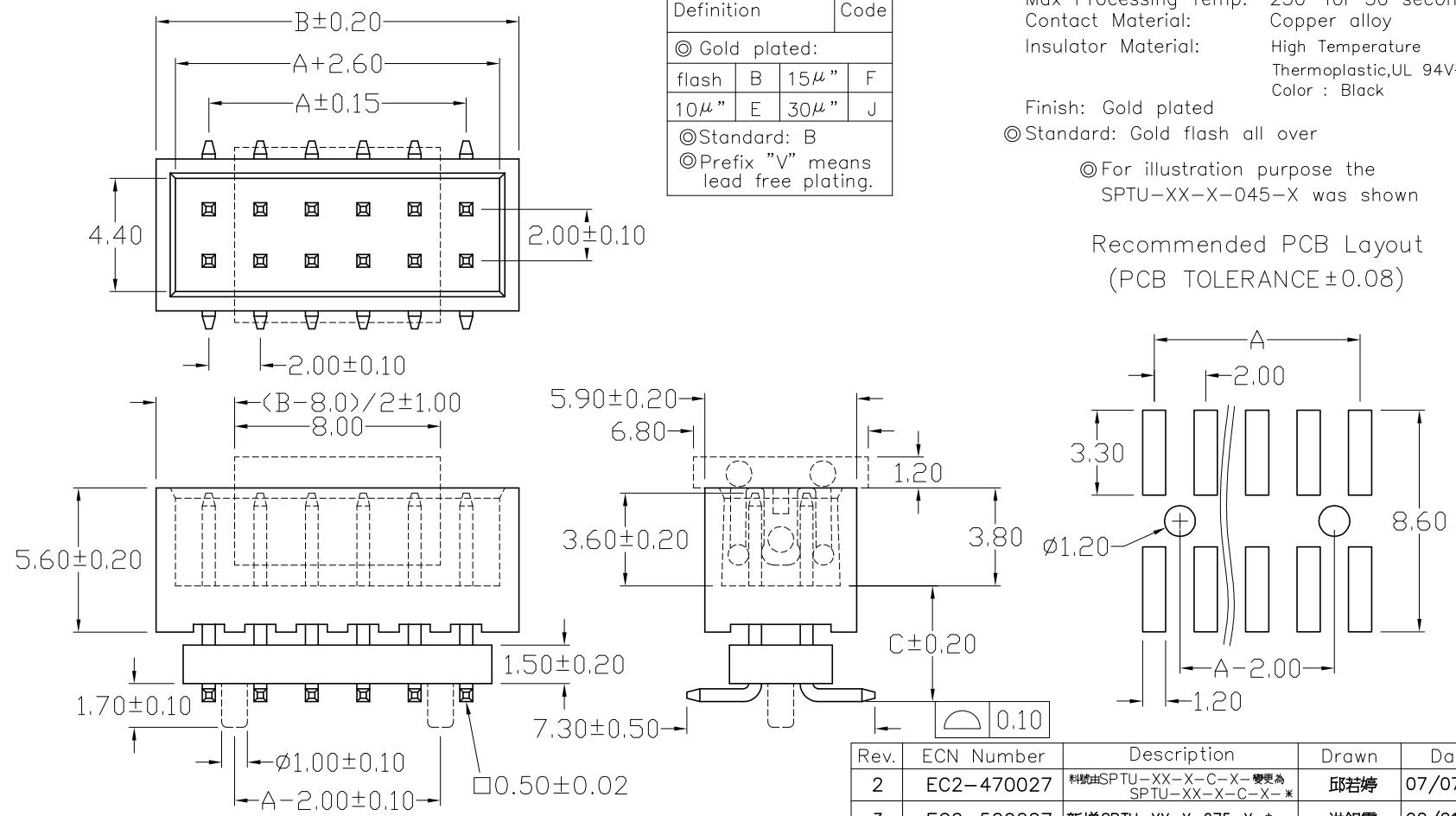


Diagram	Molding description
○	mass production & assemble mold
◎	sample & assemble mold
⊕	mass production & fix mold
⊕	sample & fix mold

Rev.	ECN Number	Description	Drawn	Date
2	EC2-470027	料號由SPTU-XX-X-C-X-變更為SPTU-XX-X-C-X-*	邱若婷	07/07/04'
3	EC2-520227	新增SPTU-XX-X-075-X-*	洪銀雯	02/21 05'
4	EC2-540573	新增SPTU-XX-X-058-X-*	陳顯鑫	04/27 05'

<p>Plastron Precision Co., Ltd. 樟翔精密股份有限公司</p>	GENERAL TOLERANCE		SCALE 1=1	ORIGINAL DRAWN 邱若婷	DATE 03'/08/14	DWG. NO. 12-32 F:\DWG\CDWG\PTU\PTUMOC.DWG PARTS NO. SPTU-XX-X-C-X-*	TITLE 2.0X2.0mm SMD SHROUDED STACKER (成品規格圖) REV. 4 SHEET 1/2
	XX. ± 0.50	XXX. ±	UNIT MM	CHECK 林錫錦	DATE 04/27 05'		
	X. ± 0.30	.XXX ±	SIZE A4/4	APPROVE 林錫錦	DATE 04/27 05'		
	.X ± 0.25	.X' ± 4'					
.XX ± 0.20	.X' ± 4'						